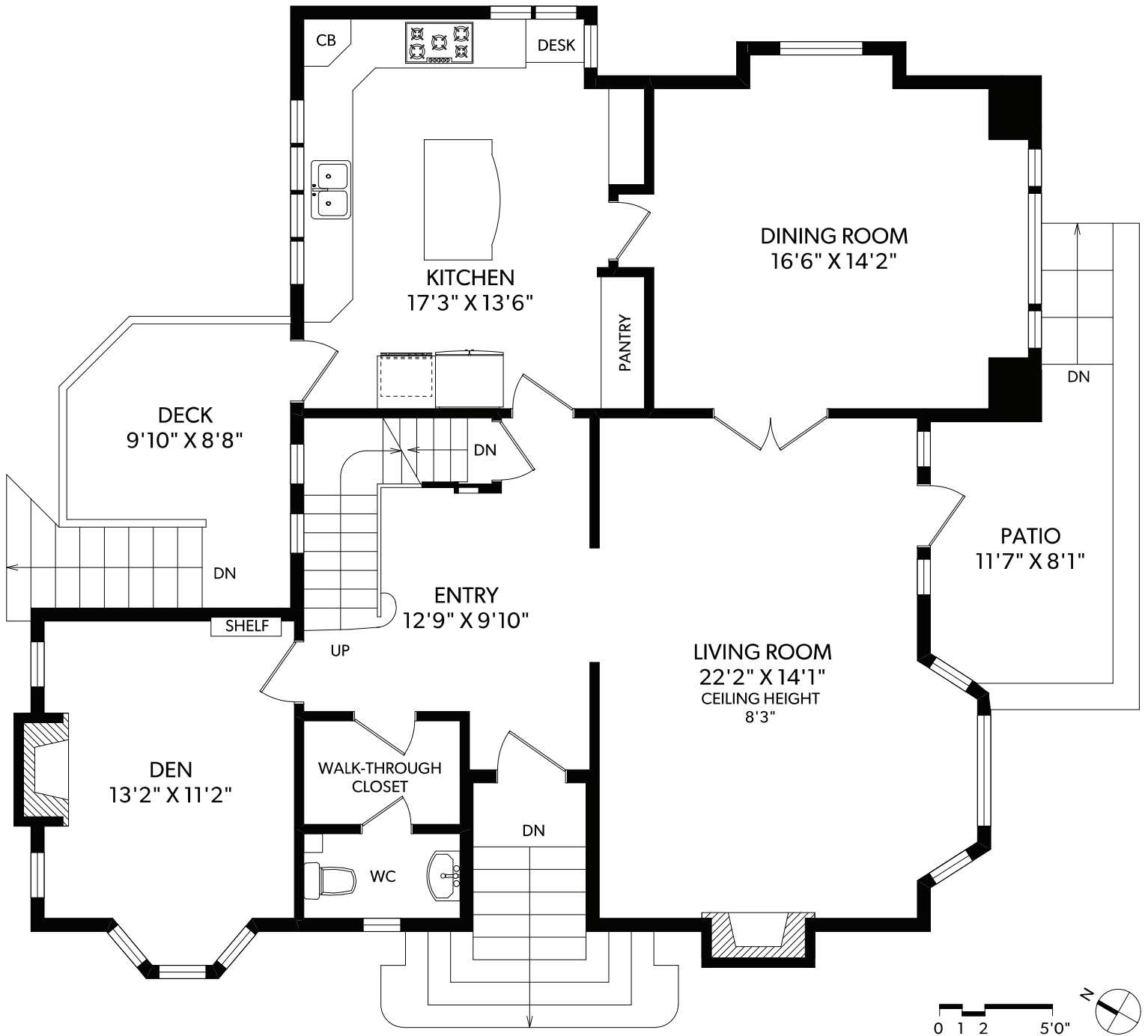


# MAIN FLOOR



FLOOR	FINISHED	UNFINISHED	TOTAL	OTHER AREAS
MAIN	1368	0	1368	GARAGE 483
UPPER	1186	0	1186	DECK 105
LOWER	450	402	852	PATIOS 237
<b>TOTAL</b>	<b>3004</b>	<b>402</b>	<b>3406</b>	STORAGE 113



## 290 BEACH DRIVE



**MIKE BOORMAN**

REAL ESTATE PROFESSIONAL - VICTORIA, BC



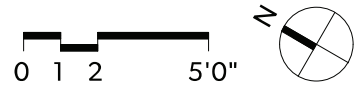
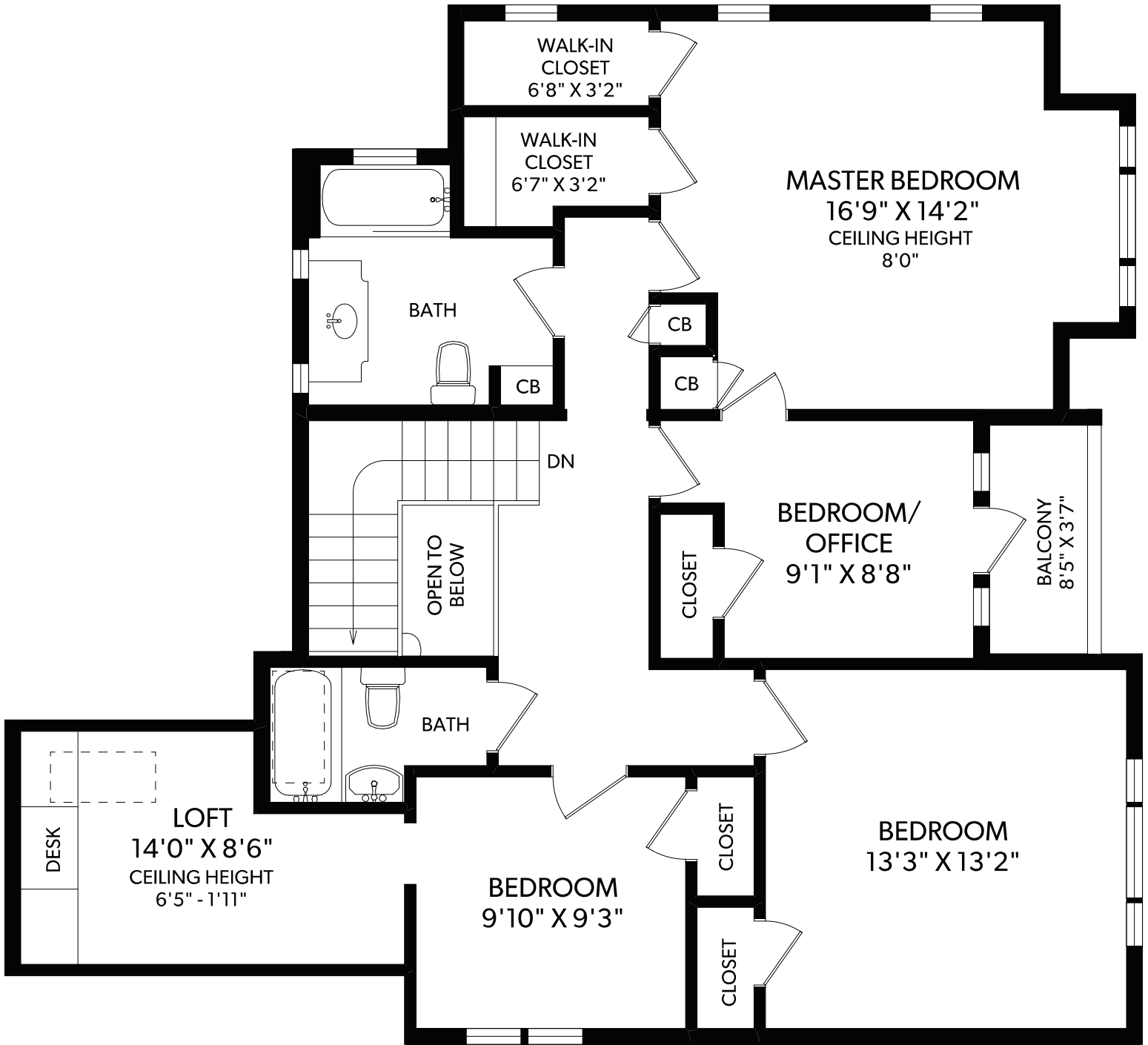
**CHRISTIE'S**  
INTERNATIONAL REAL ESTATE

250-388-6998  
ORDERS@REALFOTO.CA

MEASURED 10/16/2018 BY TODD MAYER

All information furnished regarding this property is from sources deemed reliable but no warranty or representation is made to the accuracy thereof.

# UPPER FLOOR



FLOOR	FINISHED	UNFINISHED	TOTAL	OTHER AREAS	
MAIN	1368	0	1368	GARAGE	483
UPPER	1186	0	1186	DECK	105
LOWER	450	402	852	PATIOS	237
<b>TOTAL</b>	<b>3004</b>	<b>402</b>	<b>3406</b>	STORAGE	113

## REAL FOTO 290 BEACH DRIVE

250-388-6998  
ORDERS@REALFOTO.CA



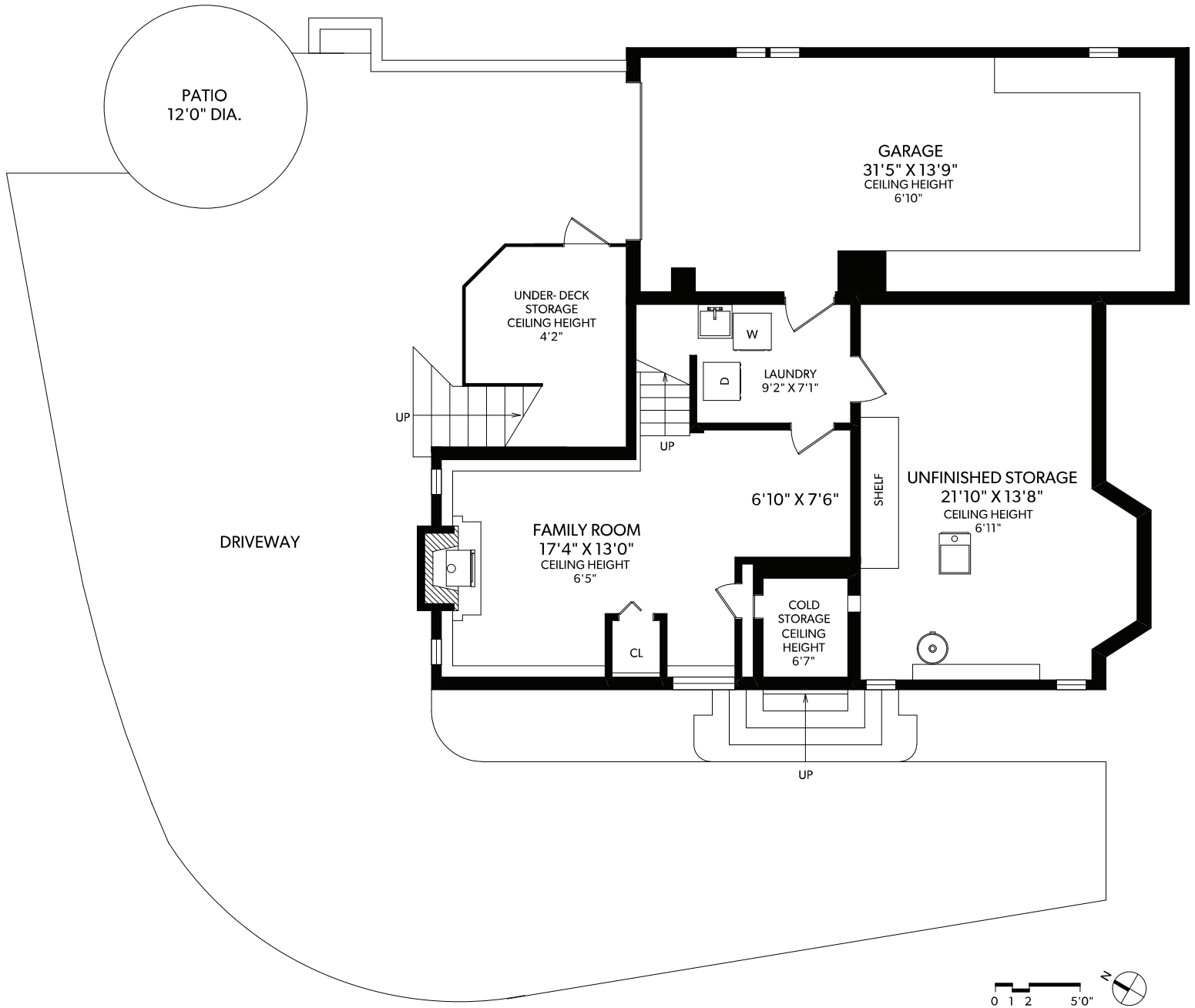
**MIKE BOORMAN**  
REAL ESTATE PROFESSIONAL - VICTORIA, BC



**CHRISTIE'S**  
INTERNATIONAL REAL ESTATE

MEASURED 10/16/2018 BY TODD MAYER

# LOWER FLOOR



FLOOR	FINISHED	UNFINISHED	TOTAL	OTHER AREAS
MAIN	1368	0	1368	GARAGE 483
UPPER	1186	0	1186	DECK 105
LOWER	450	402	852	PATIOS 237
<b>TOTAL</b>	<b>3004</b>	<b>402</b>	<b>3406</b>	STORAGE 113

**REAL FOTO** **290 BEACH DRIVE**

**MB MIKE BOORMAN**  
REAL ESTATE PROFESSIONAL - VICTORIA, BC

250-388-6998  
ORDERS@REALFOTO.CA

**Newport Realty** **CHRISTIE'S**  
INTERNATIONAL REAL ESTATE

MEASURED 10/16/2018 BY TODD MAYER

All information furnished regarding this property is from sources deemed reliable but no warranty or representation is made to the accuracy thereof.