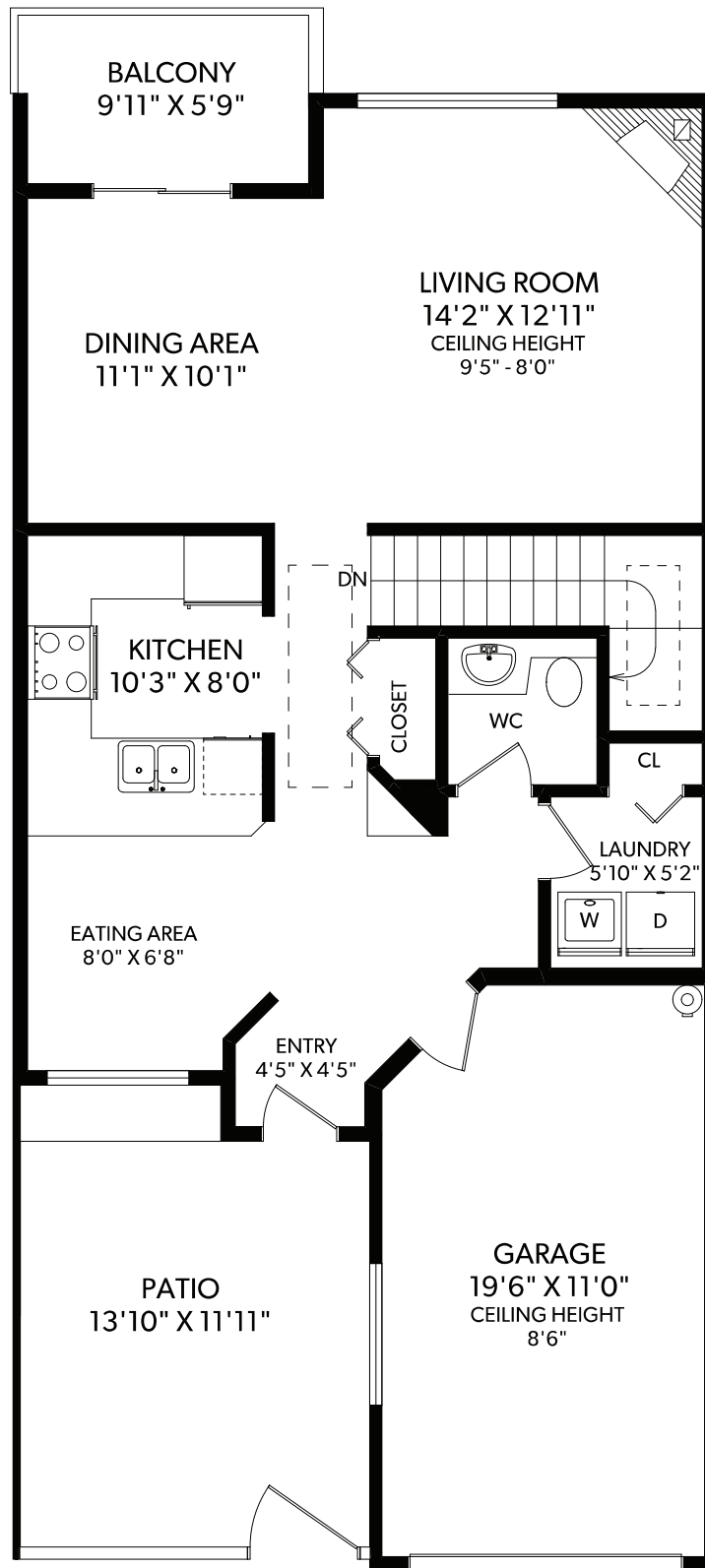
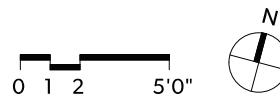


MAIN FLOOR



FLOOR	FINISHED	UNFINISHED	TOTAL
MAIN	759	0	759
LOWER	832	0	832
TOTAL	1591	0	1591

OTHER AREAS	
GARAGE	228
PATIO	187
BALCONY	62
LOW STORAGE	832



REAL FOTO 12-2190 DRENNAN ROAD

DOCUMENT PREPARED FOR THE EXCLUSIVE USE OF
DIMOCK PROPERTY GROUP
 TAMMI DIMOCK* & JACOB DIMOCK*

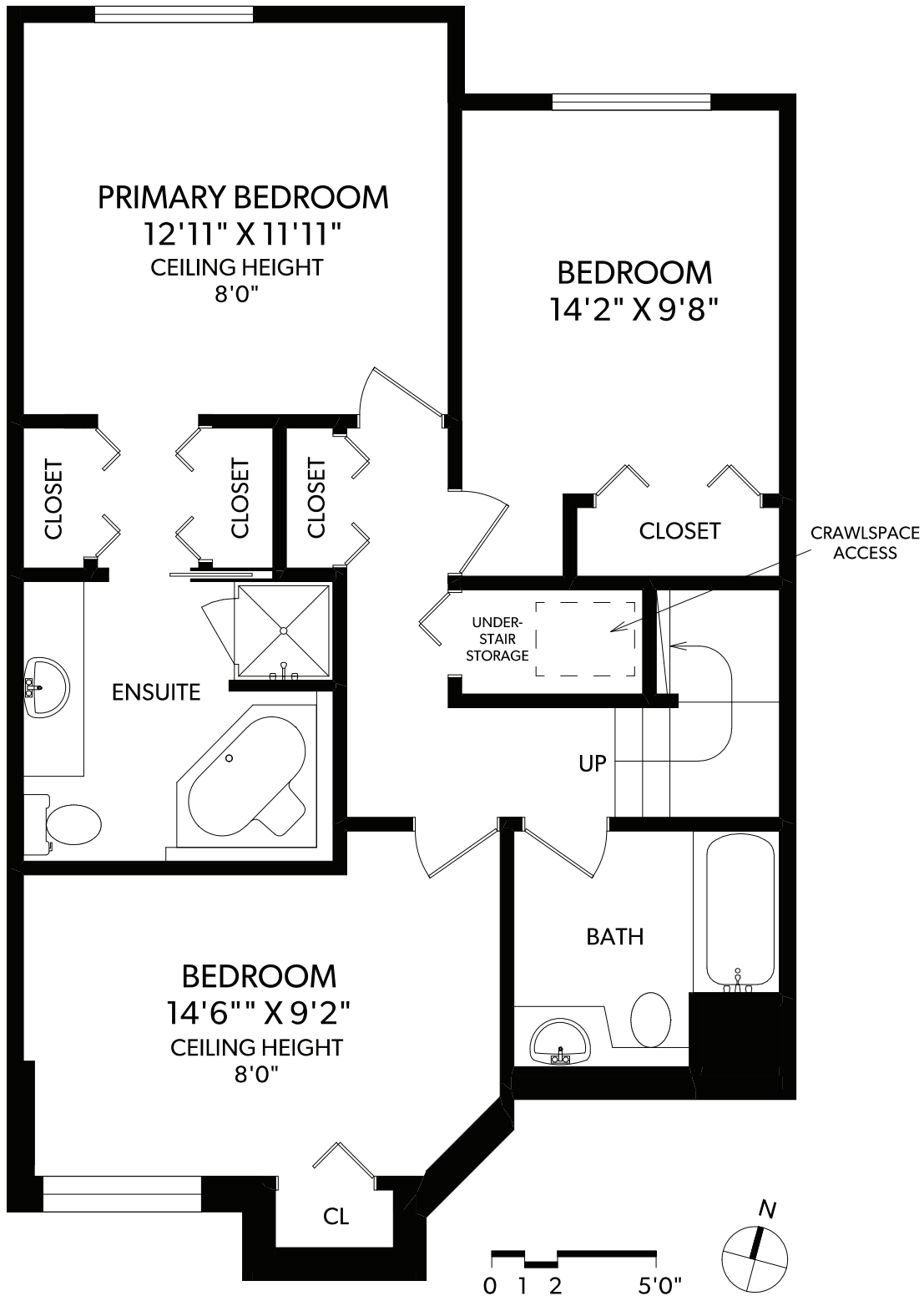
250-388-6998
 ORDERS@REALFOTO.CA MEASURED 06/16/2021 BY CLAY OVINGE



*PERSONAL REAL ESTATE CORPORATION

All information furnished regarding this property is from sources deemed reliable but no warranty or representation is made to the accuracy thereof. Purchaser to verify measurements if important.

LOWER FLOOR



FLOOR	FINISHED	UNFINISHED	TOTAL	OTHER AREAS	
MAIN	759	0	759	GARAGE	228
LOWER	832	0	832	PATIO	187
TOTAL	1591	0	1591	BALCONY	62
				LOW STORAGE	832

REAL FOTO 12-2190 DRENNAN ROAD

DOCUMENT PREPARED FOR THE EXCLUSIVE USE OF
DIMOCK PROPERTY GROUP
 TAMMI DIMOCK* & JACOB DIMOCK*

250-388-6998
 ORDERS@REALFOTO.CA MEASURED 06/16/2021 BY CLAY OVINGE

ROYAL LEPAGE
 Coast Capital Realty
INDEPENDENTLY OWNED AND OPERATED



DIMOCK
 PROPERTY GROUP

*PERSONAL REAL ESTATE CORPORATION

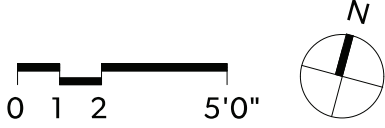
All information furnished regarding this property is from sources deemed reliable but no warranty or representation is made to the accuracy thereof. Purchaser to verify measurements if important.



LOW-HEIGHT STORAGE
 35'4" X 22'10"
 CEILING HEIGHT
 6'2" - 2'4"

FLOOR	FINISHED	UNFINISHED	TOTAL
MAIN	759	0	759
LOWER	832	0	832
TOTAL	1591	0	1591

OTHER AREAS	
GARAGE	228
PATIO	187
BALCONY	62
LOW STORAGE	832



12-2190 DRENNAN ROAD

DOCUMENT PREPARED FOR THE EXCLUSIVE USE OF
DIMOCK PROPERTY GROUP
 TAMMI DIMOCK* & JACOB DIMOCK*

250-388-6998
 ORDERS@REALFOTO.CA MEASURED 06/16/2021 BY CLAY OVINGE



*PERSONAL REAL ESTATE CORPORATION

All information furnished regarding this property is from sources deemed reliable but no warranty or representation is made to the accuracy thereof. Purchaser to verify measurements if important.