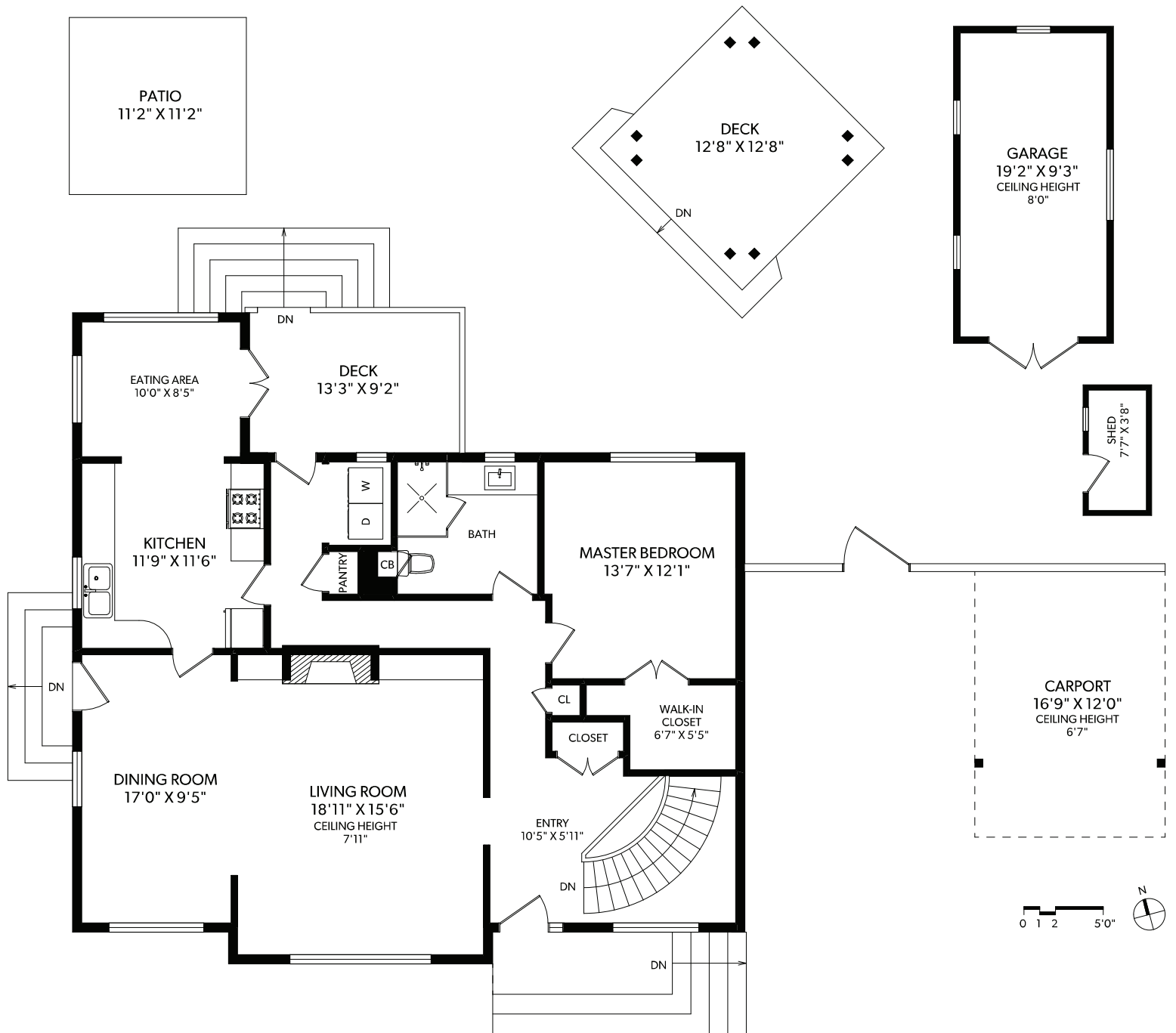


# MAIN FLOOR



FLOOR	FINISHED	UNFINISHED	TOTAL	OTHER AREAS
MAIN	1416	0	1416	GARAGE 202
LOWER	1042	242	1284	CARPORIT 207
TOTAL	2458	242	<b>2700</b>	DECKS 280
				PATIO 125
				SHED 36

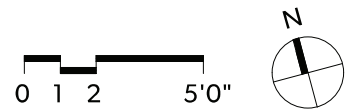
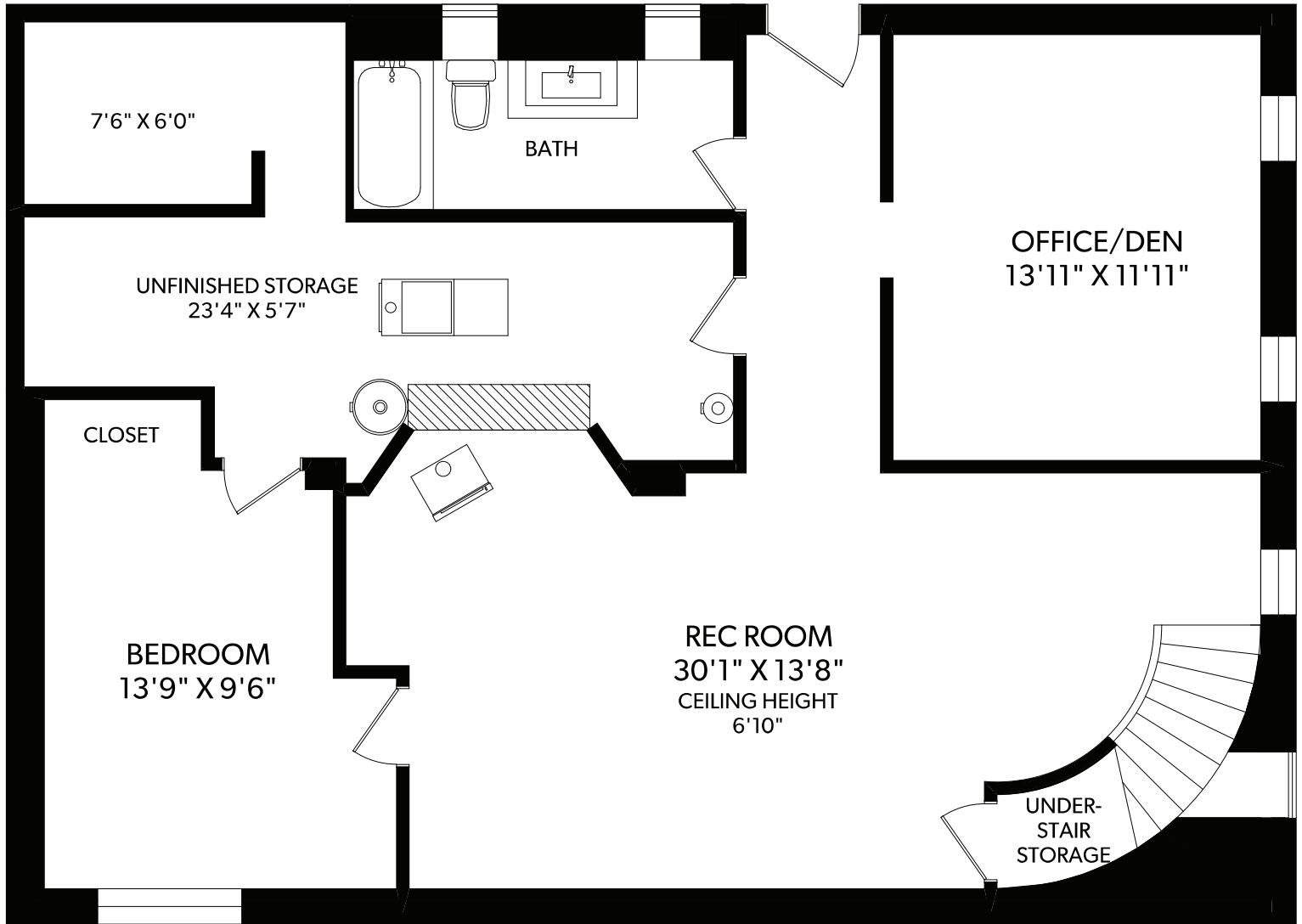
**REAL FOTO** **1790 BARRIE ROAD**  
 DOCUMENT PREPARED FOR THE EXCLUSIVE USE OF  
**ROXANNE BRASS\***

250-388-6998 \*PERSONAL REAL ESTATE CORPORATION  
 ORDERS@REALFOTO.CA MEASURED 06/25/2020 BY TODD MAYER

All information furnished regarding this property is from sources deemed reliable but no warranty or representation is made to the accuracy thereof. Purchaser to verify measurements if important.



# LOWER FLOOR



FLOOR	FINISHED	UNFINISHED	TOTAL	OTHER AREAS
MAIN	1416	0	1416	GARAGE 202
LOWER	1042	242	1284	CARPORT 207
TOTAL	2458	242	<b>2700</b>	DECKS 280
				PATIO 125
				SHED 36



## 1790 BARRIE ROAD

DOCUMENT PREPARED FOR THE EXCLUSIVE USE OF

### ROXANNE BRASS\*

250-388-6998  
ORDERS@REALFOTO.CA

\*PERSONAL REAL ESTATE CORPORATION  
MEASURED 06/25/2020 BY TODD MAYER



## RE/MAX

### CAMOSUN

Each Office Independently Owned and Operated

All information furnished regarding this property is from sources deemed reliable but no warranty or representation is made to the accuracy thereof. Purchaser to verify measurements if important.