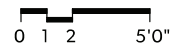
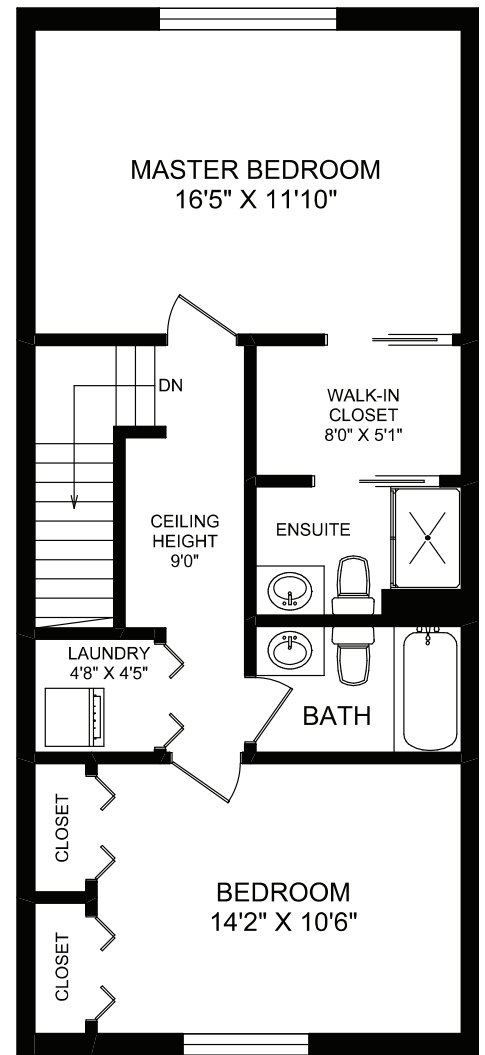
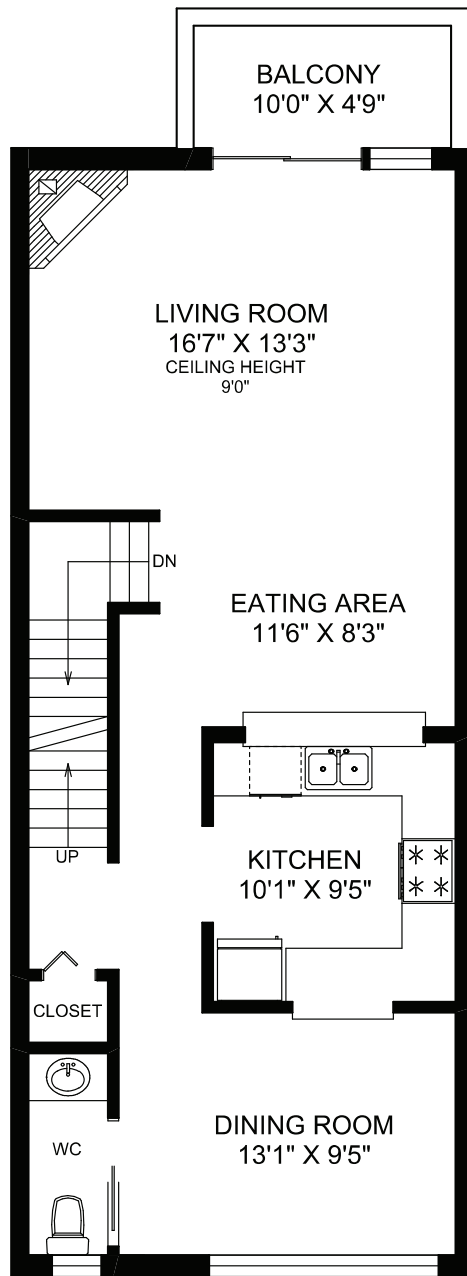
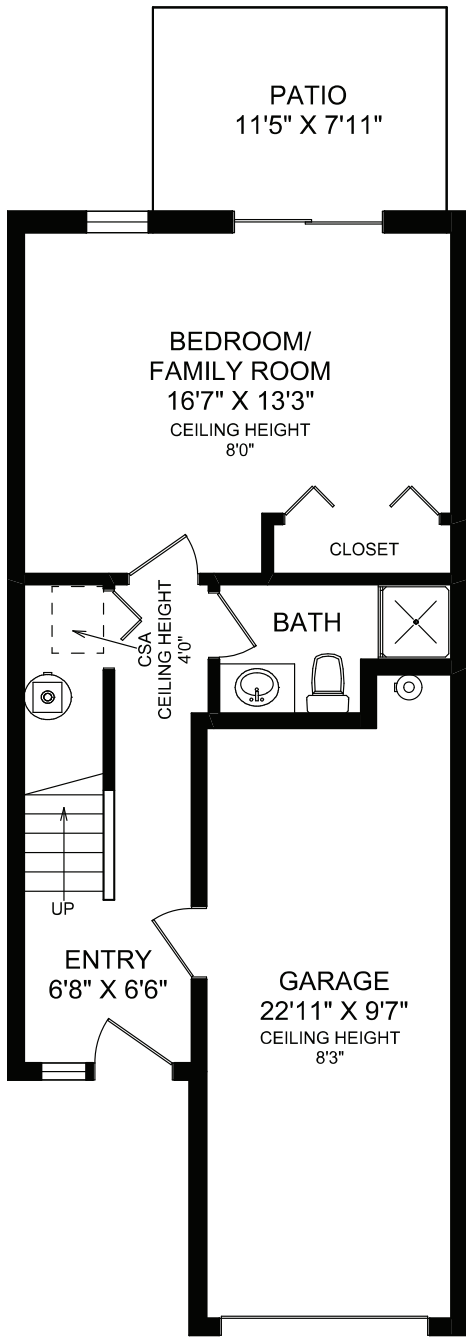


LOWER FLOOR

MAIN FLOOR

UPPER FLOOR



FLOOR	FINISHED	UNFINISHED	TOTAL
MAIN	785	0	785
UPPER	729	0	729
LOWER	458	0	458
TOTAL	1972	0	1972

OTHER AREAS	
GARAGE	254
PATIO	90
BALCONY	61



8-1115 CRAIGFLOWER ROAD

DOCUMENT PREPARED FOR THE EXCLUSIVE USE OF

FERGUS KYNE*

*PERSONAL REAL ESTATE CORPORATION
MEASURED 09/09/2012 BY JONATHAN BATCHELDER



CHRISTIE'S
INTERNATIONAL REAL ESTATE

250-388-6998
ORDERS@REALFOTO.CA

All information furnished regarding this property is from sources deemed reliable but no warranty or representation is made to the accuracy thereof. Purchaser to verify measurements if important.