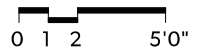
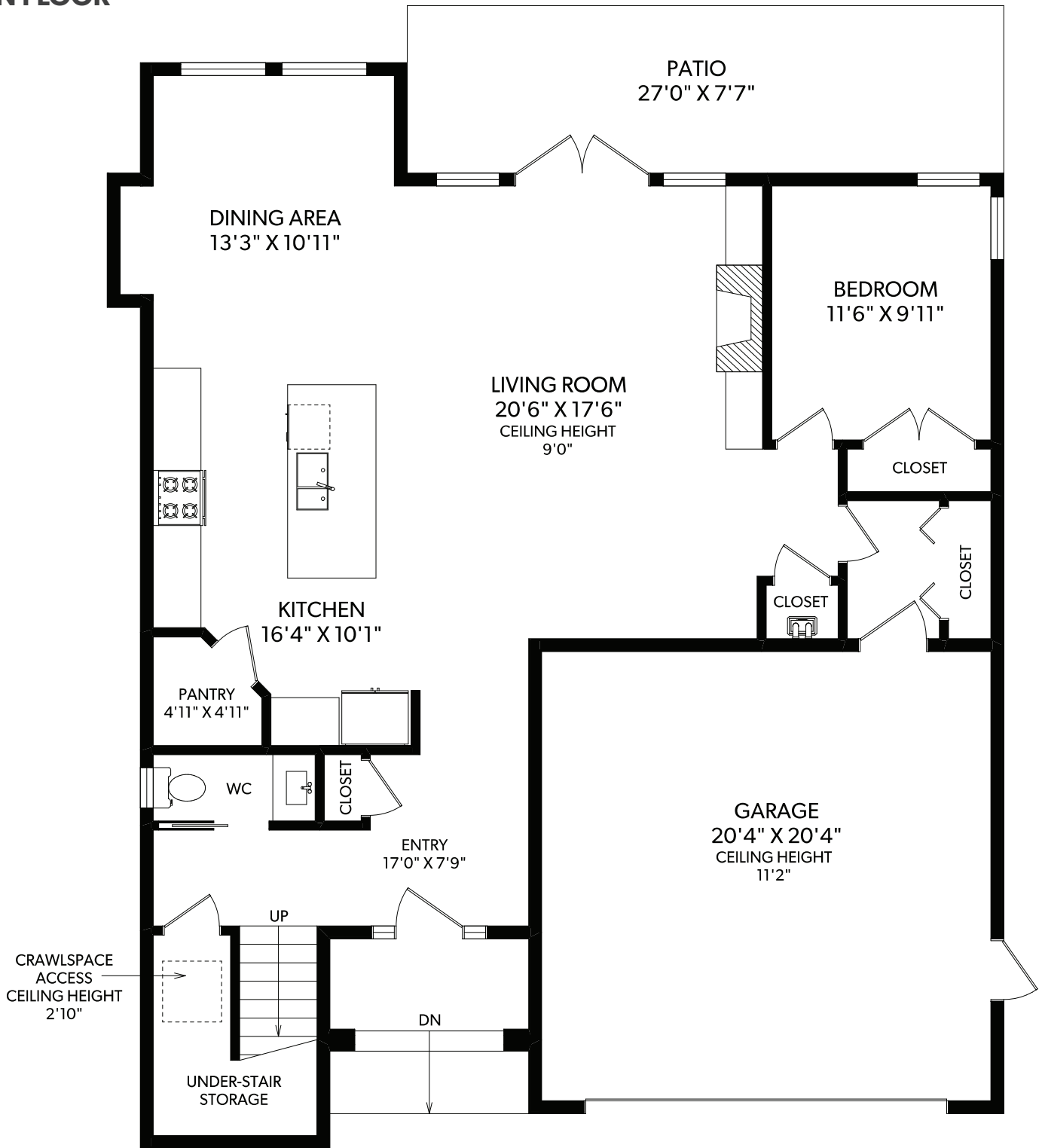


# 1032 DELTANA AVENUE

## MAIN FLOOR



FLOOR	FINISHED	UNFINISHED	TOTAL	OTHER AREAS	
MAIN	1234	0	1234	GARAGE	442
UPPER	1352	0	1352	PATIO	205
TOTAL	2586	0	2586		



250-388-6998  
ORDERS@REALFOTO.CA



**Johnny Olarte**  
REAL ESTATE



**RE/MAX**  
CAMOSUN

Each Office Independently Owned and Operated

MEASURED 10/08/2019 BY CLAY OVINGE

All information furnished regarding this property is from sources deemed reliable but no warranty or representation is made to the accuracy thereof. Purchaser to verify measurements if important.

# 1032 DELTANA AVENUE

## UPPER FLOOR



FLOOR	FINISHED	UNFINISHED	TOTAL	OTHER AREAS	
MAIN	1234	0	1234	GARAGE	442
UPPER	1352	0	1352	PATIO	205
<b>TOTAL</b>	<b>2586</b>	<b>0</b>	<b>2586</b>		



250-388-6998  
ORDERS@REALFOTO.CA



**Johnny Olarte**  
REAL ESTATE



**RE/MAX**  
**CAMOSUN**

Each Office Independently Owned and Operated

MEASURED 10/08/2019 BY CLAY OVINGE