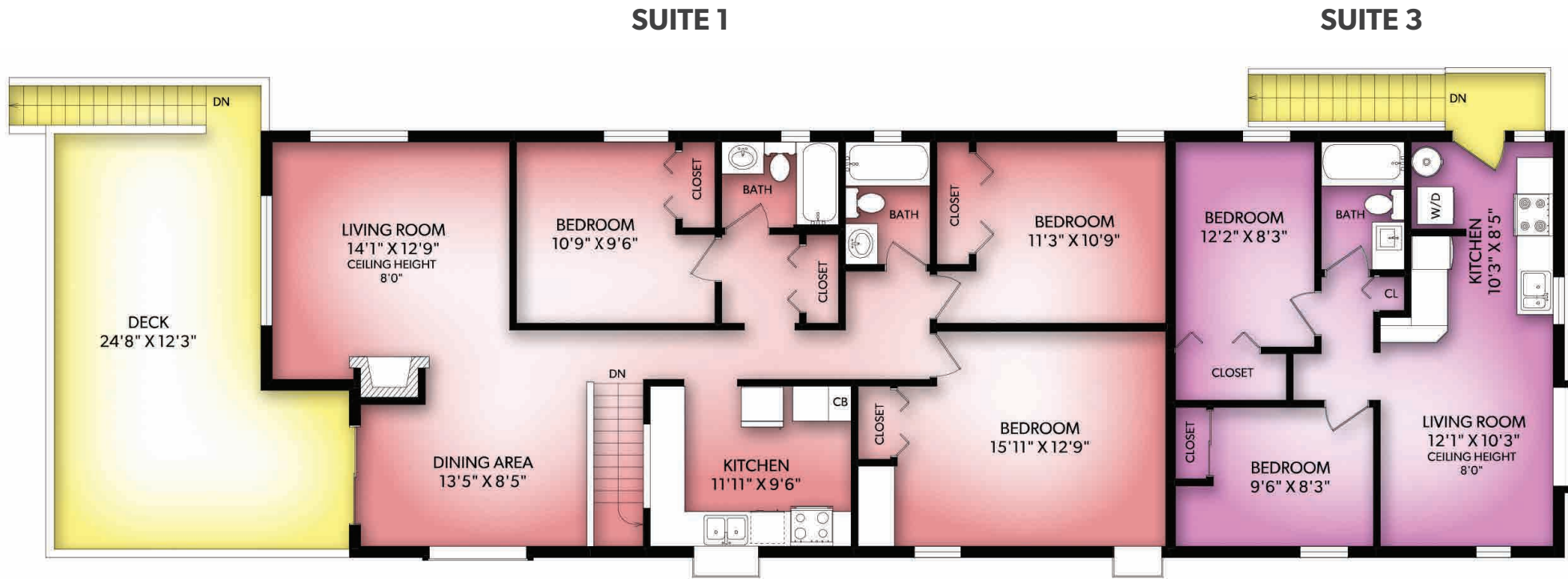


MAIN FLOOR



LEGAL TRIPLEX

SUITE 1	FINISHED	UNFINISHED	TOTAL	OTHER AREAS	
MAIN	1317	0	1317	DECK	309
LOWER	623	0	623		
TOTAL	1940	0	1940		

SUITE 2	FINISHED	UNFINISHED	TOTAL
LOWER	672	0	672
TOTAL	672	0	672

SUITE 3	FINISHED	UNFINISHED	TOTAL	OTHER AREAS	
MAIN	592	0	592	GARAGE	458
TOTAL	592	0	592		

FLOOR	FINISHED	UNFINISHED	TOTAL	OTHER AREAS	
MAIN	1909	0	1909	GARAGE	458
LOWER	1295	0	1295	DECK	309
TOTAL	3204	0	3204		

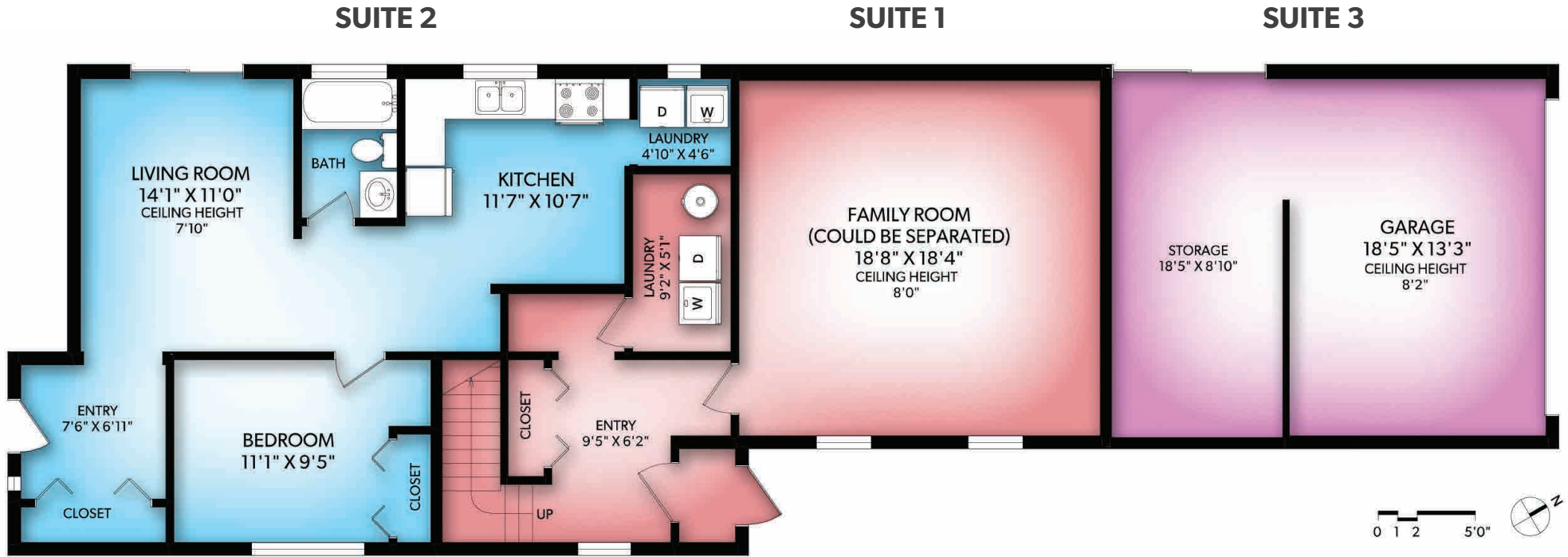
REAL FOTO **4580 ELK LAKE DRIVE**
 DOCUMENT PREPARED FOR THE EXCLUSIVE USE OF
JASON LESLIE*

250-388-6998
 ORDERS@REALFOTO.CA
 PERSONAL REAL ESTATE CORPORATION
 MEASURED 04/17/2019 BY CLAY OVINGE

All information furnished regarding this property is from sources deemed reliable but no warranty or representation is made to the accuracy thereof. Purchaser to verify measurements if important.



LOWER FLOOR



LEGAL TRIPLEX

SUITE 1	FINISHED	UNFINISHED	TOTAL	OTHER AREAS	
MAIN	1317	0	1317	DECK	309
LOWER	623	0	623		
TOTAL	1940	0	1940		

SUITE 2	FINISHED	UNFINISHED	TOTAL
LOWER	672	0	672
TOTAL	672	0	672

SUITE 3	FINISHED	UNFINISHED	TOTAL	OTHER AREAS	
MAIN	592	0	592	GARAGE	458
TOTAL	592	0	592		

FLOOR	FINISHED	UNFINISHED	TOTAL	OTHER AREAS	
MAIN	1909	0	1909	GARAGE	458
LOWER	1295	0	1295	DECK	309
TOTAL	3204	0	3204		



4580 ELK LAKE DRIVE

DOCUMENT PREPARED FOR THE EXCLUSIVE USE OF

JASON LESLIE*

250-388-6998
ORDERS@REALFOTO.CA
PERSONAL REAL ESTATE CORPORATION
MEASURED 04/17/2019 BY CLAY OVINGE



All information furnished regarding this property is from sources deemed reliable but no warranty or representation is made to the accuracy thereof. Purchaser to verify measurements if important.