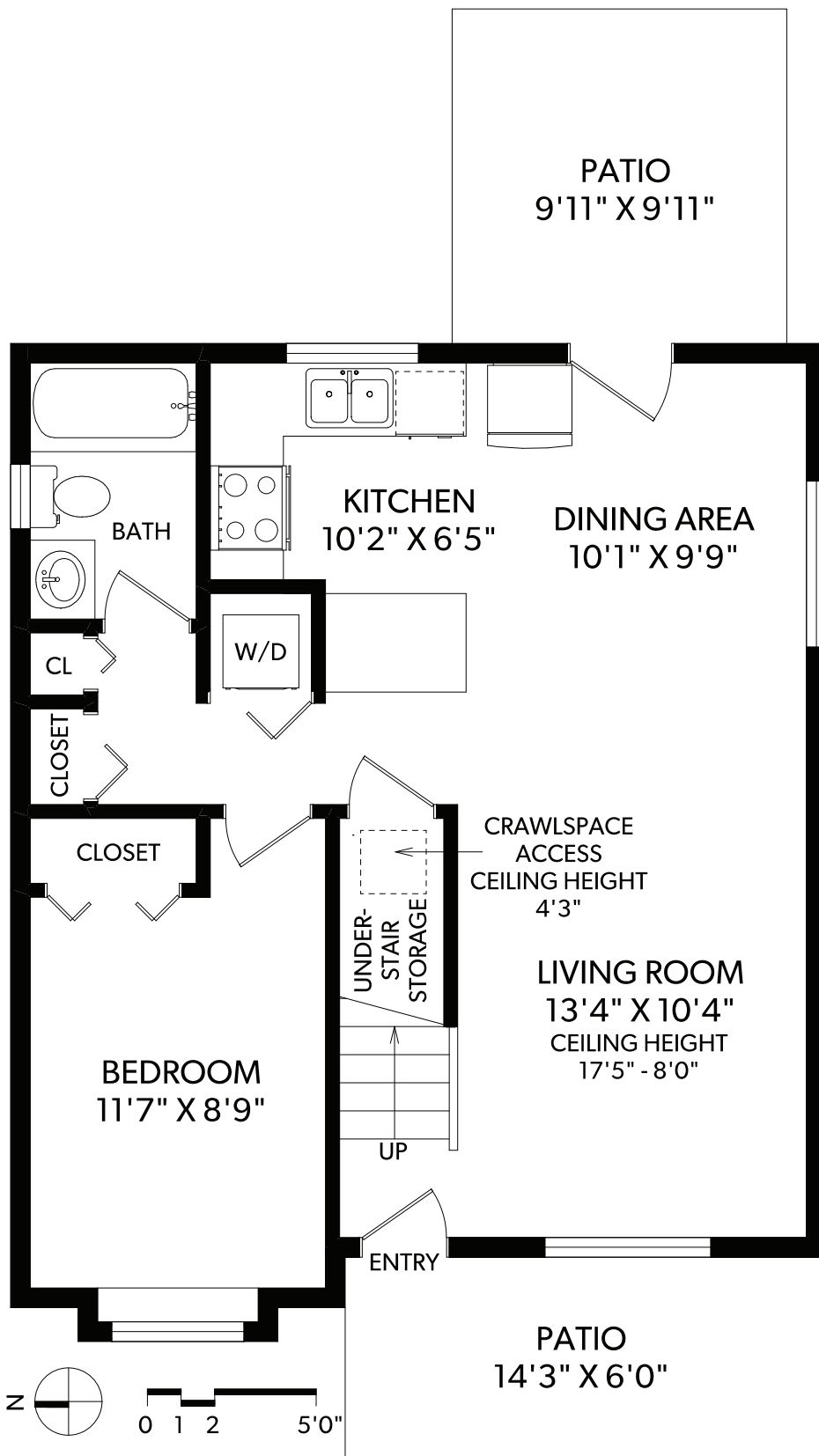


MAIN FLOOR



FLOOR	FINISHED	UNFINISHED	TOTAL	OTHER AREAS
MAIN	675	0	675	PATIOS 185
UPPER	338	0	338	
TOTAL	1013	0	1013	



2907 GOLDEN SPIKE PLACE

DOCUMENT PREPARED FOR THE EXCLUSIVE USE OF

IAN BROWN*

*PERSONAL REAL ESTATE CORPORATION
MEASURED 03/13/2019 BY CLAYTON OVINGE

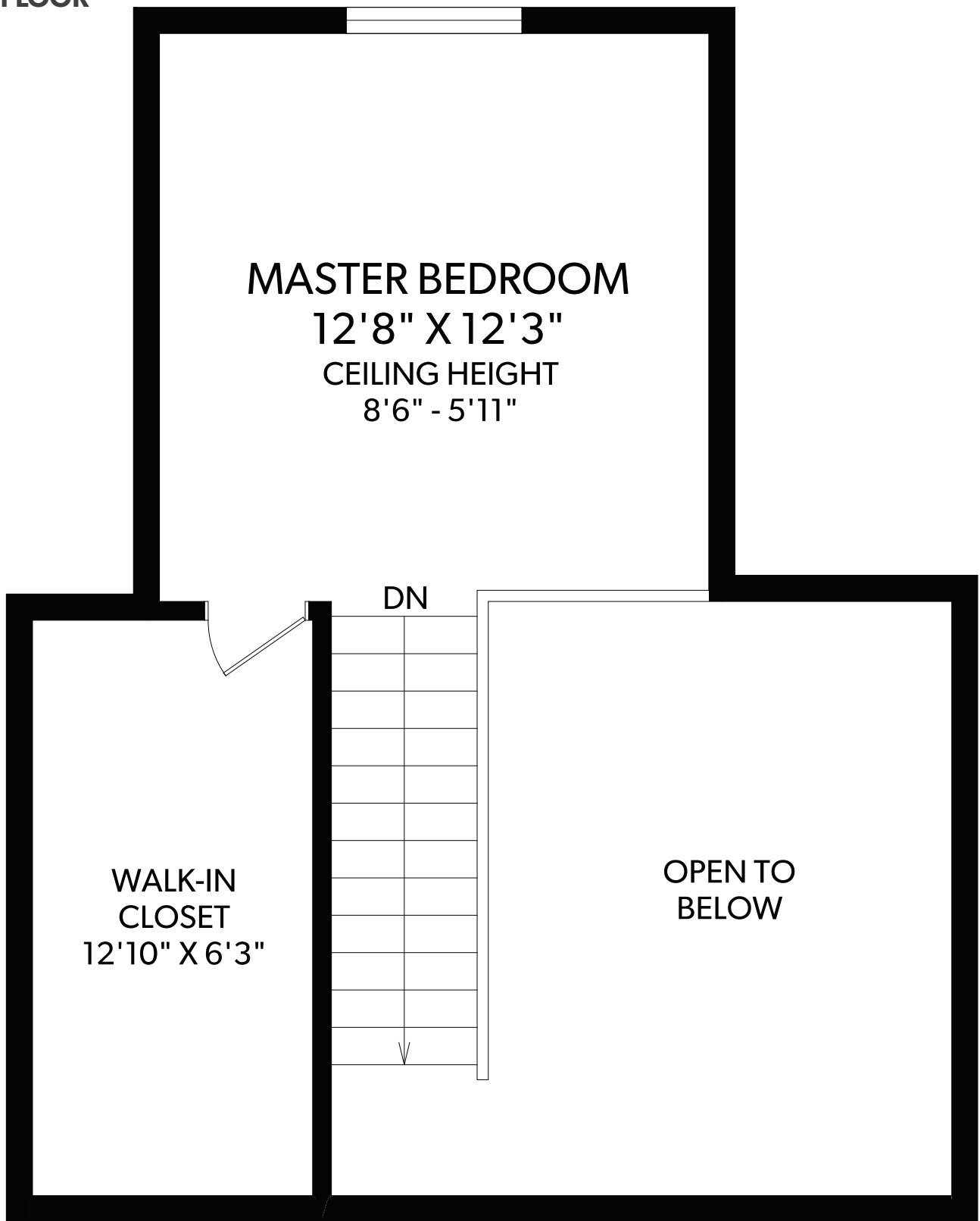


CHRISTIE'S
INTERNATIONAL REAL ESTATE

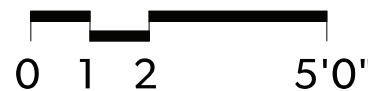
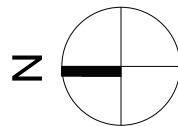
250-388-6998
ORDERS@REALFOTO.CA

All information furnished regarding this property is from sources deemed reliable but no warranty or representation is made to the accuracy thereof. Purchaser to verify measurements if important.

UPPER FLOOR



FLOOR	FINISHED	UNFINISHED	TOTAL	OTHER AREAS
MAIN	675	0	675	PATIOS 185
UPPER	338	0	338	
TOTAL	1013	0	1013	



2907 GOLDEN SPIKE PLACE

DOCUMENT PREPARED FOR THE EXCLUSIVE USE OF

IAN BROWN*

250-388-6998
ORDERS@REALFOTO.CA

*PERSONAL REAL ESTATE CORPORATION
MEASURED 03/13/2019 BY CLAYTON OVINGE



CHRISTIE'S
INTERNATIONAL REAL ESTATE

All information furnished regarding this property is from sources deemed reliable but no warranty or representation is made to the accuracy thereof. Purchaser to verify measurements if important.