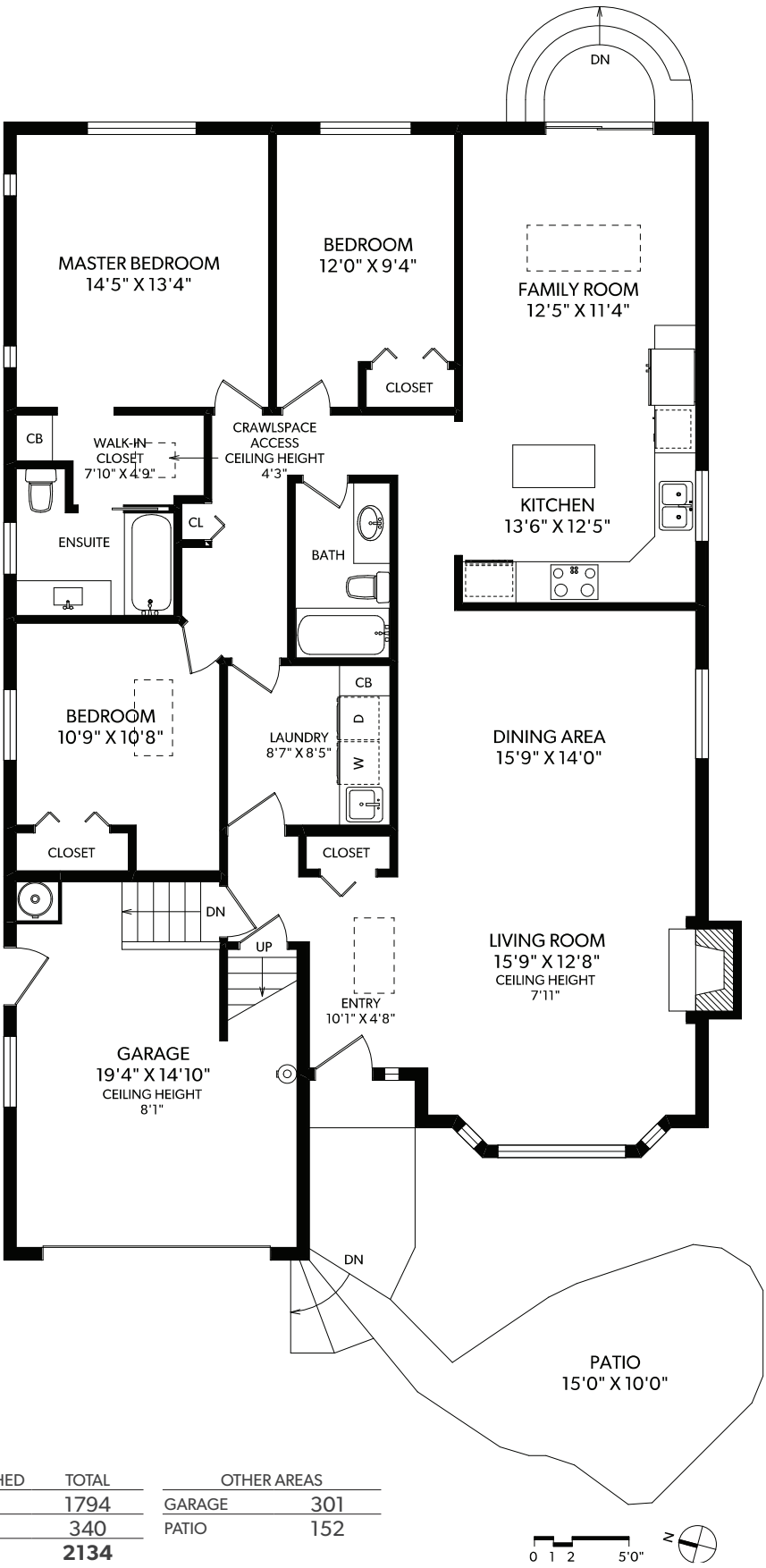


MAIN FLOOR



FLOOR	FINISHED	UNFINISHED	TOTAL
MAIN	1794	0	1794
UPPER	340	0	340
TOTAL	2134	0	2134

OTHER AREAS	
GARAGE	301
PATIO	152



1023 DEAL STREET



MIKE BOORMAN  
REAL ESTATE PROFESSIONAL - VICTORIA, BC



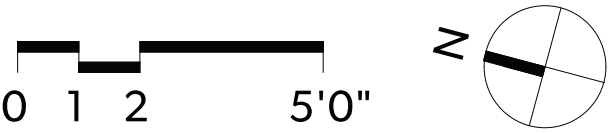
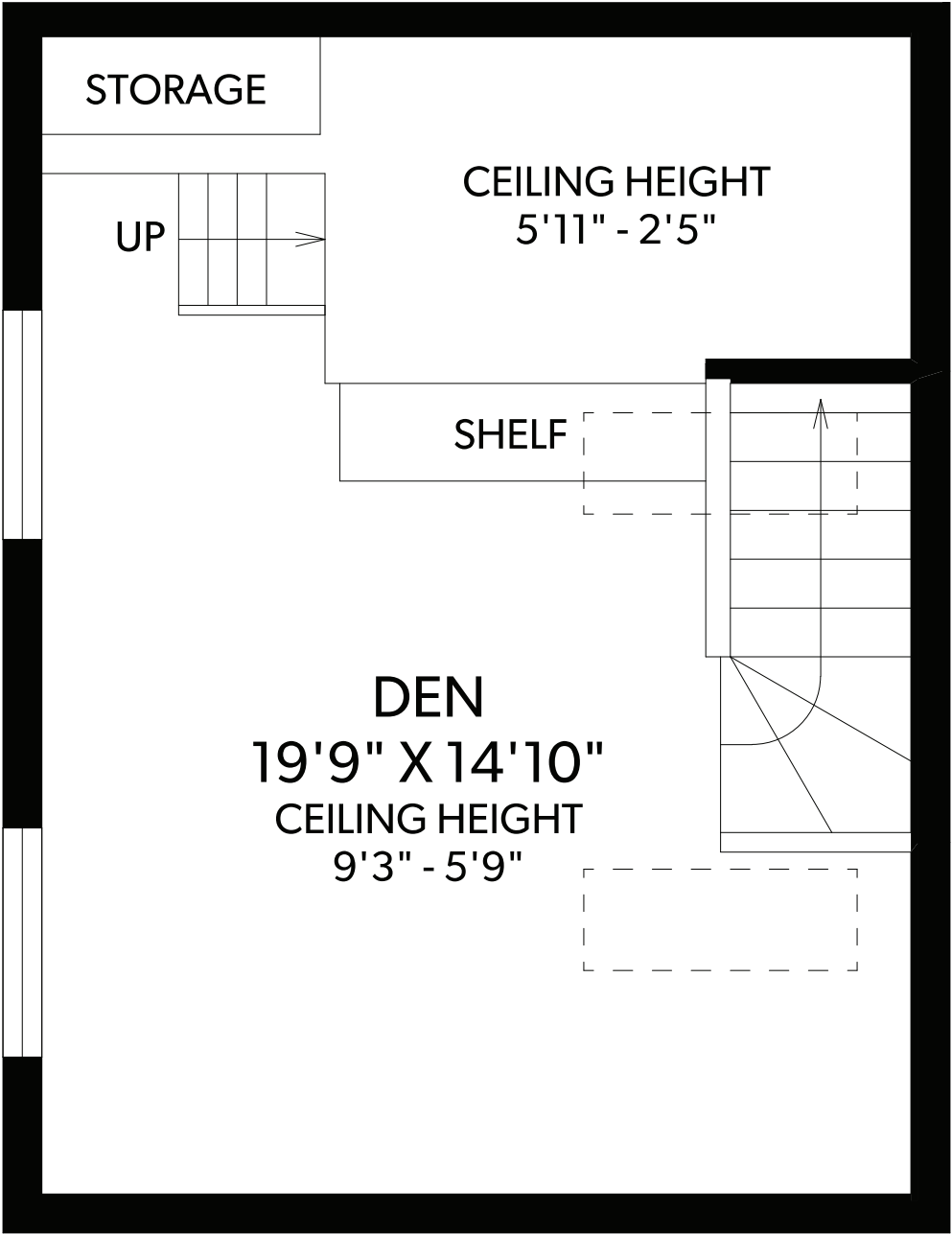
CHRISTIE'S  
INTERNATIONAL REAL ESTATE

250-388-6998  
ORDERS@REALFOTO.CA

MEASURED 03/07/2019 BY TODD MAYER

All information furnished regarding this property is from sources deemed reliable but no warranty or representation is made to the accuracy thereof. Purchaser to verify measurements if important.

UPPER FLOOR



FLOOR	FINISHED	UNFINISHED	TOTAL	OTHER AREAS	
MAIN	1794	0	1794	GARAGE	301
UPPER	340	0	340	PATIO	152
TOTAL	2134	0	2134		



1023 DEAL STREET



MIKE BOORMAN  
REAL ESTATE PROFESSIONAL - VICTORIA, BC



CHRISTIE'S  
INTERNATIONAL REAL ESTATE