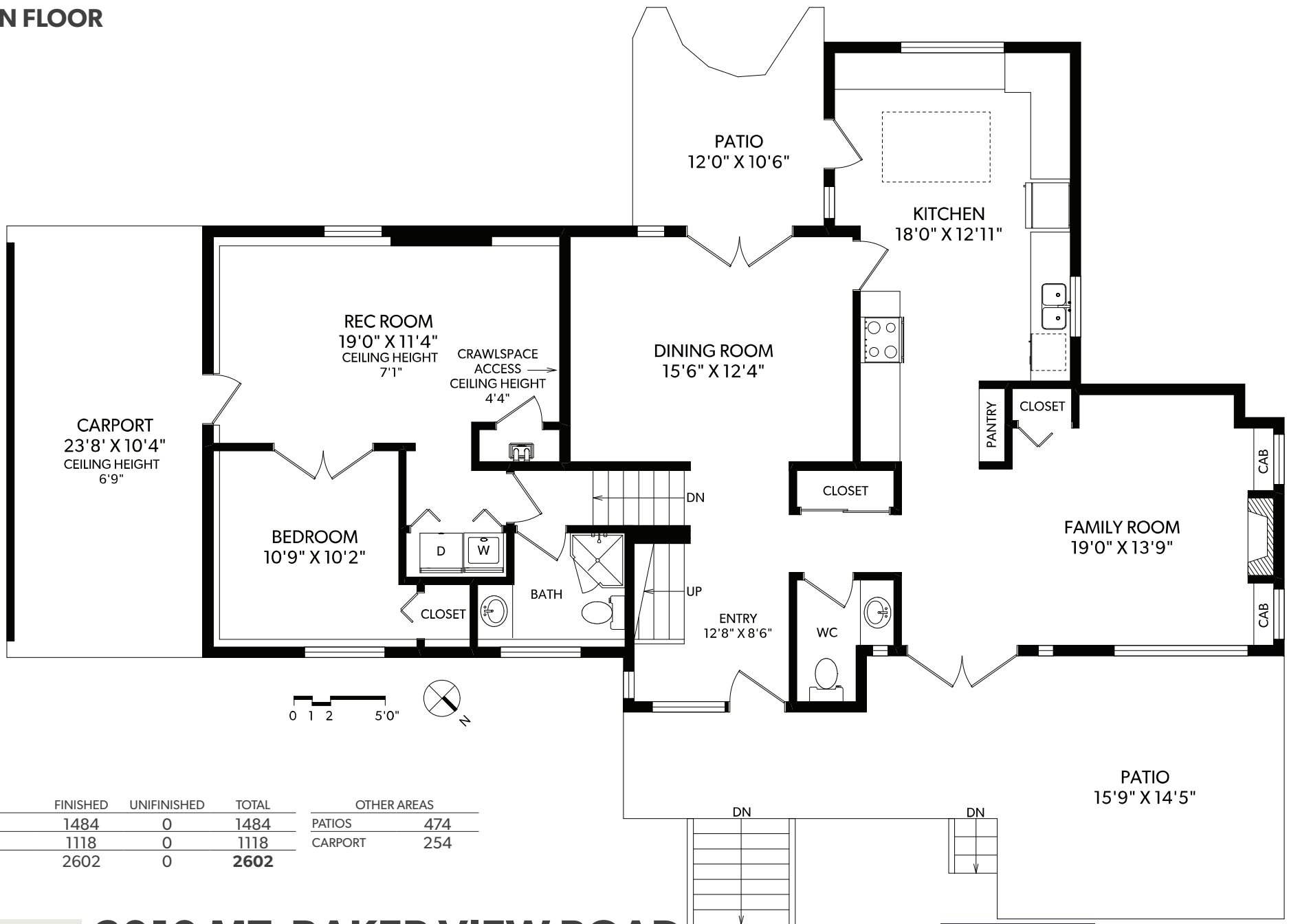


MAIN FLOOR

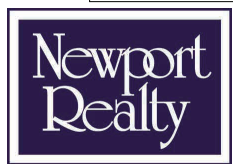


FLOOR	FINISHED	UNFINISHED	TOTAL	OTHER AREAS
MAIN	1484	0	1484	PATIOS 474
UPPER	1118	0	1118	CARPORT 254
TOTAL	2602	0	2602	

REAL FOTO 2919 MT. BAKER VIEW ROAD

JULIE RUST
REAL ESTATE MARKETING
250-388-6998
ORDERS@REALFOTO.CA

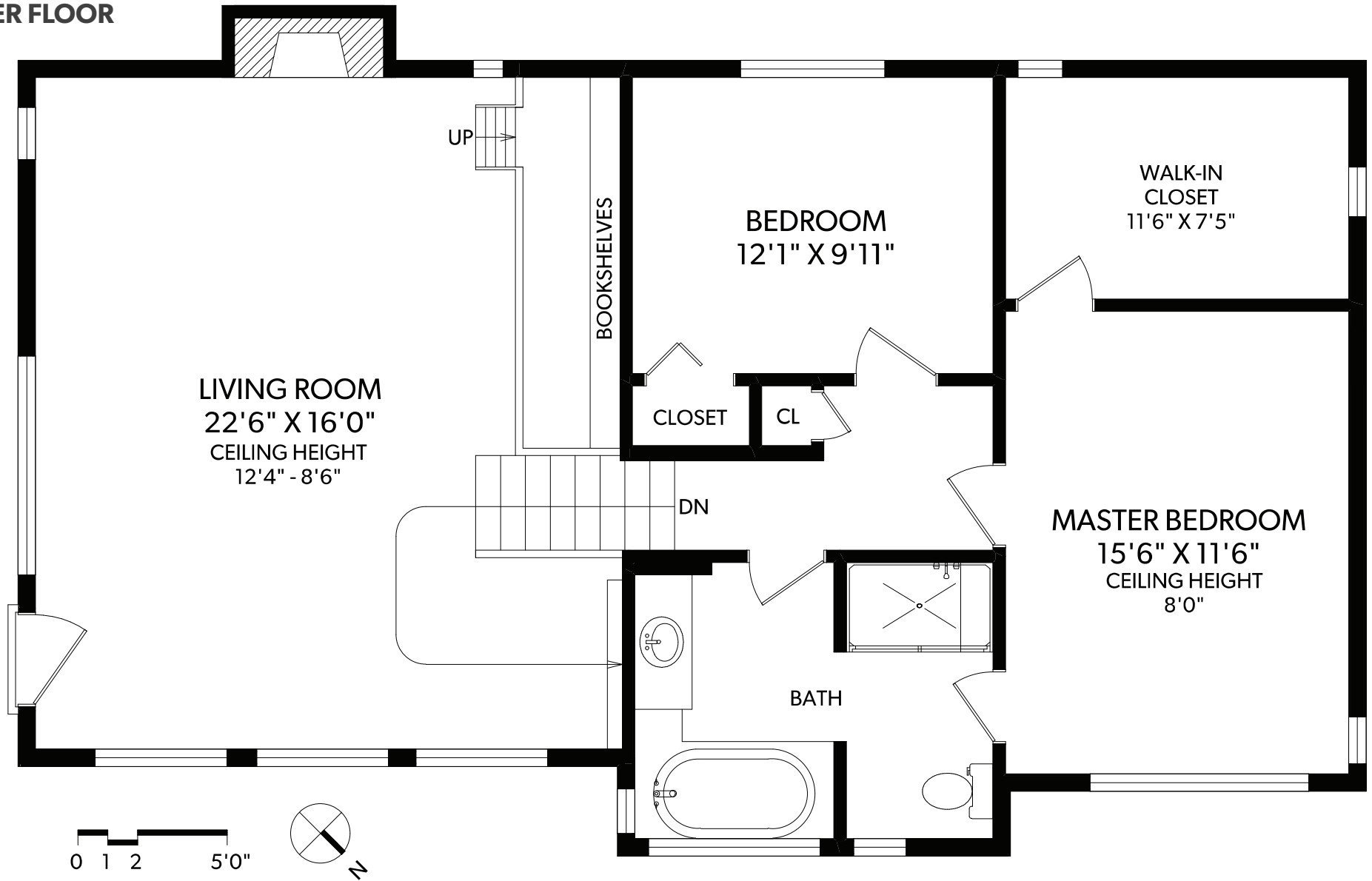
MIKE BOORMAN
REAL ESTATE PROFESSIONAL - VICTORIA, BC



CHRISTIE'S
INTERNATIONAL REAL ESTATE

All information furnished regarding this property is from sources deemed reliable but no warranty or representation is made to the accuracy thereof. Purchaser to verify measurements if important.

UPPER FLOOR



FLOOR	FINISHED	UNFINISHED	TOTAL	OTHER AREAS	
MAIN	1484	0	1484	PATIOS	474
UPPER	1118	0	1118	CARPOR	254
TOTAL	2602	0	2602		

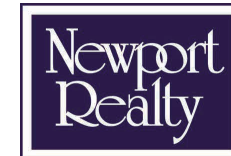


2919 MT. BAKER VIEW ROAD

JULIE RUST
REAL ESTATE MARKETING



MIKE BOORMAN
REAL ESTATE PROFESSIONAL - VICTORIA, BC



CHRISTIE'S
INTERNATIONAL REAL ESTATE

250-388-6998
ORDERS@REALFOTO.CA

MEASURED 03/05/2019 BY CLAYTON OVINCE

All information furnished regarding this property is from sources deemed reliable but no warranty or representation is made to the accuracy thereof. Purchaser to verify measurements if important.