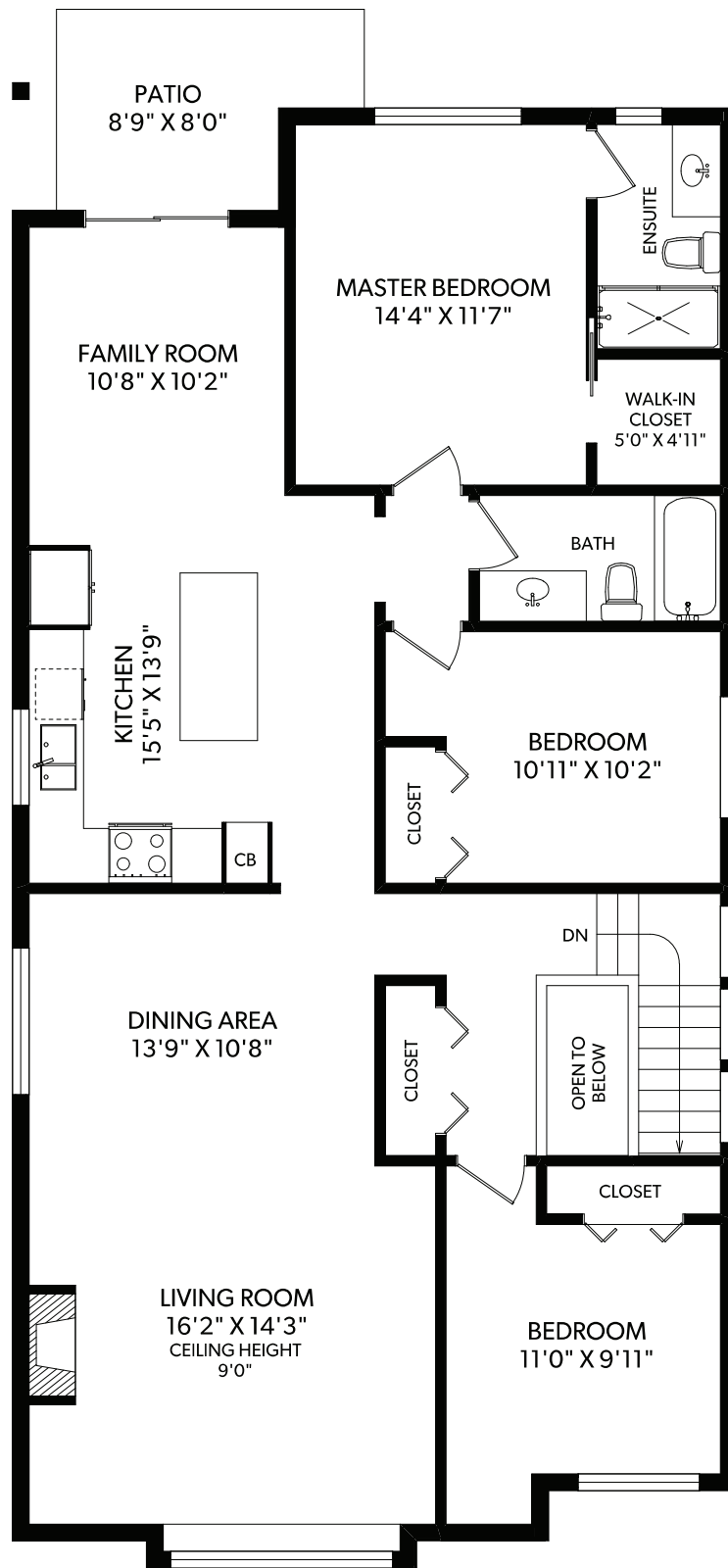
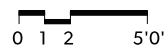


# MAIN FLOOR



FLOOR	FINISHED	UNFINISHED	TOTAL	OTHER AREAS
MAIN	1575	0	1575	GARAGE 456
GROUND	1034	0	1034	PATIOS 157
<b>TOTAL</b>	<b>2609</b>	<b>0</b>	<b>2609</b>	



**1234 FLINT ROAD**  
 DOCUMENT PREPARED FOR THE EXCLUSIVE USE OF  
**RON BAHREY**

250-388-6998  
 ORDERS@REALFOTO.CA

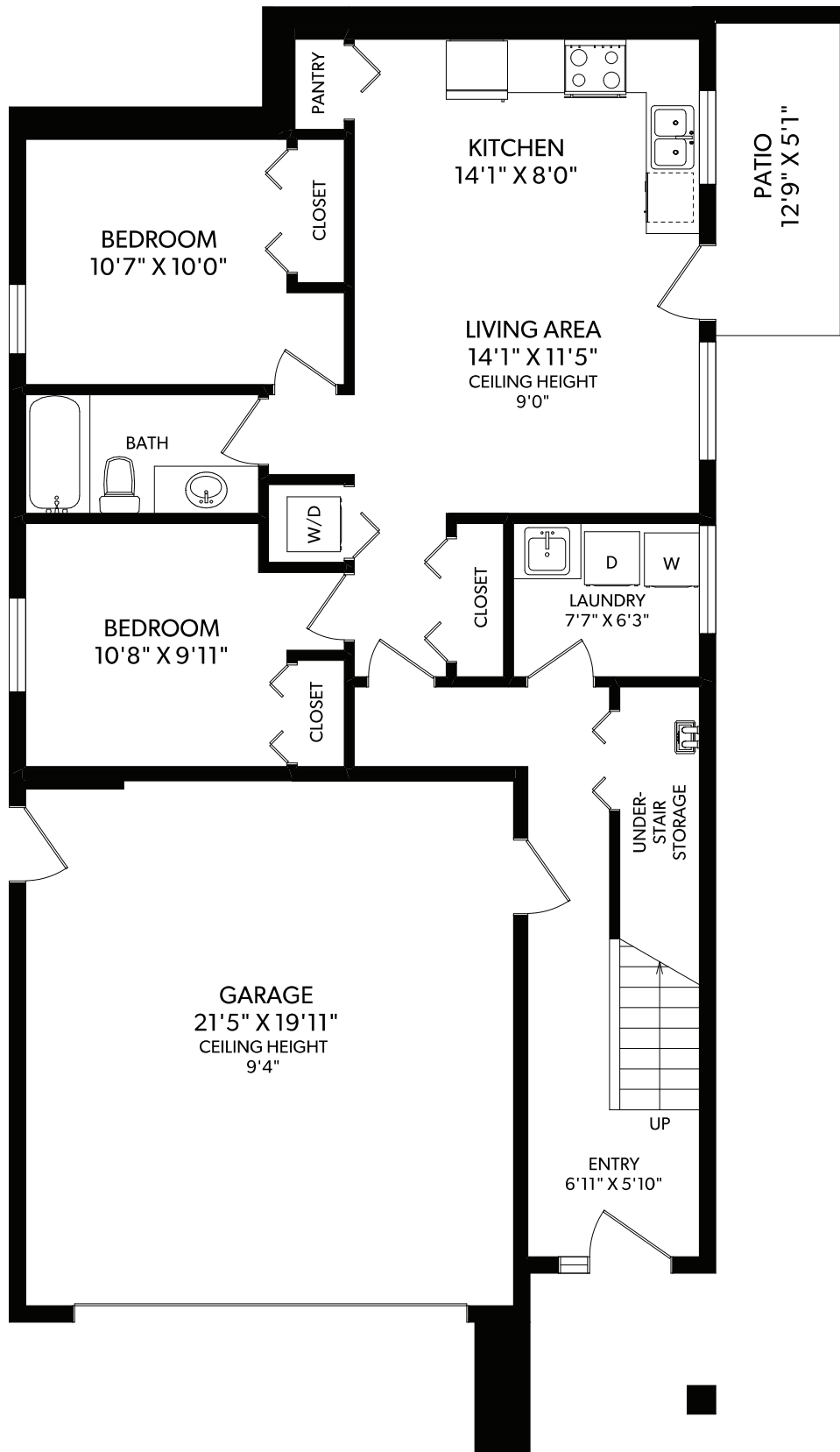
MEASURED 01/22/2019 BY TODD MAYER



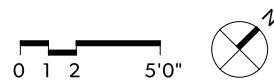
**RE/MAX**  
**CAMOSUN**  
 Each Office Independently Owned and Operated

All information furnished regarding this property is from sources deemed reliable but no warranty or representation is made to the accuracy thereof.

# GROUND FLOOR



FLOOR	FINISHED	UNFINISHED	TOTAL	OTHER AREAS
MAIN	1575	0	1575	GARAGE 456
GROUND	1034	0	1034	PATIOS 157
<b>TOTAL</b>	<b>2609</b>	<b>0</b>	<b>2609</b>	



**1234 FLINT ROAD**  
 DOCUMENT PREPARED FOR THE EXCLUSIVE USE OF  
**RON BAHREY**

250-388-6998  
 ORDERS@REALFOTO.CA

MEASURED 01/22/2019 BY TODD MAYER



**RE/MAX**  
**CAMOSUN**  
 Each Office Independently Owned and Operated

All information furnished regarding this property is from sources deemed reliable but no warranty or representation is made to the accuracy thereof.